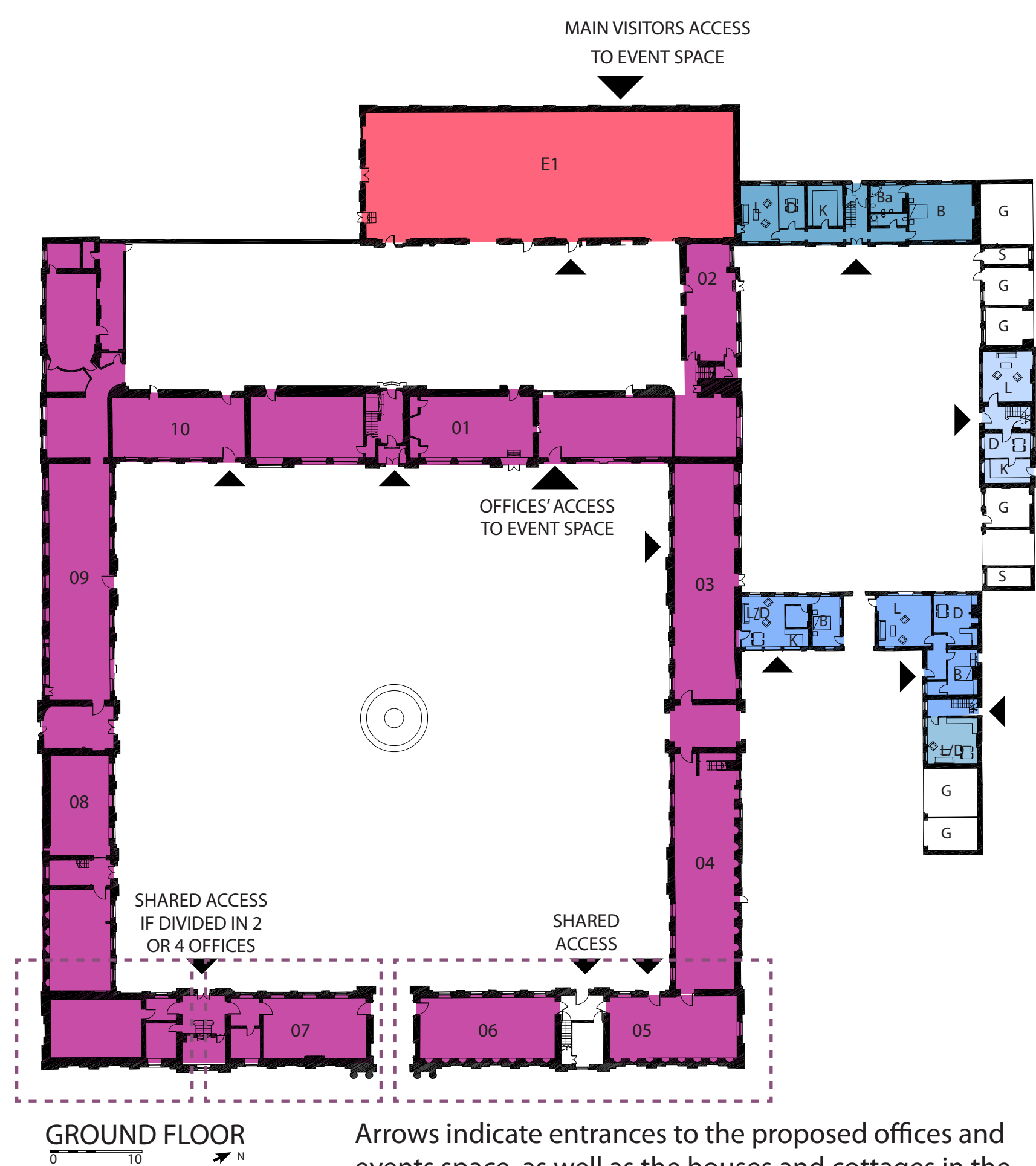


**OFFICES**

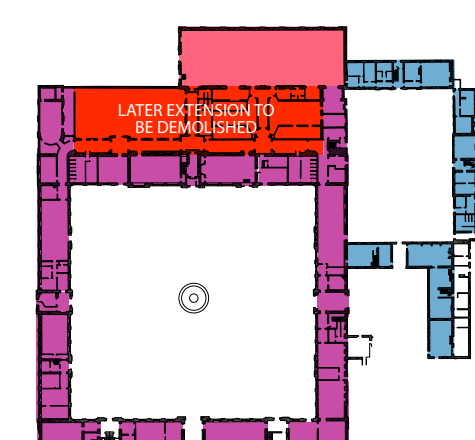
Adaptation to small offices involves the least alterations to the listed buildings, both externally and internally. Small offices (90 – 450 square metres) provide flexible space which does not rely on a single large occupant whose requirements will change over time. The 1960s additions filling in the courtyard between the stables and the riding school (marked in pink) will be removed.

**HOUSES**

In the side courts five houses and cottages of varying size will be created. These will have a very attractive outlook onto paved courts with the potential for private gardens behind.



Arrows indicate entrances to the proposed offices and events space, as well as the houses and cottages in the outer courts (marked in blue).



**WENTWORTH WOODHOUSE**  
THE STABLE COURT  
WILL BE CONVERTED AS OFFICES FOR SMALL BUSINESSES